

## Cleaning instructions



### DAILY

- ▷ mixing cup
- ▷ brewer
- ▷ waste bin
- ▷ drip tray
- ▷ outer surface

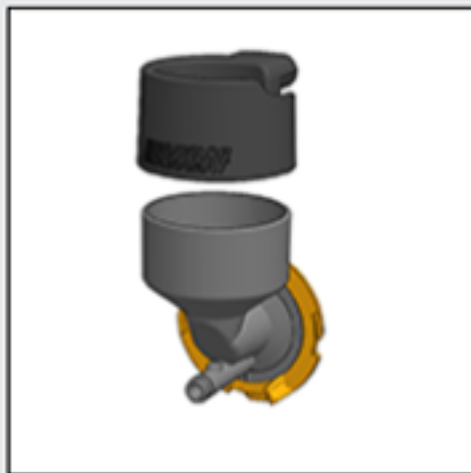
### WEEKLY

- ▷ canisters
- ▷ bean container
- ▷ grinder outlet
- ▷ fan
- ▷ inside

scan the QR  
code for more  
information



## Daily cleaning - mixing cup



- Remove the mixing cup
- Clean the loose parts with warm water and soap (dishwasher-safe)
- Put everything back in place correctly
- Check all connections
- Activate 'rinse machine'



## Daily cleaning - brewer



- Remove the brewer
- Clean the loose parts with warm water and soap (NOT dishwasher-safe)
- Put everything back in place correctly
- Check all connections
- Activate 'rinse machine'



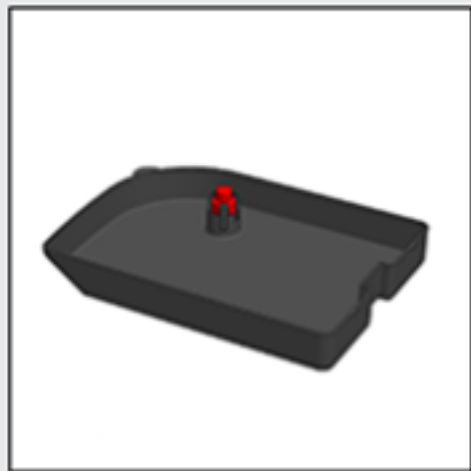
## Daily cleaning - waste bin



- Clean the waste bin with warm water and soap (NOT dishwasher safe)
- Dry



## Daily cleaning - drip tray



- Clean the drip tray with warm water and soap (NOT dishwasher-safe)
- Check the dobber



## Daily cleaning - outer surface



- Turn the machine off
- Clean the outside of the machine and the drip tray plate with a damp cloth



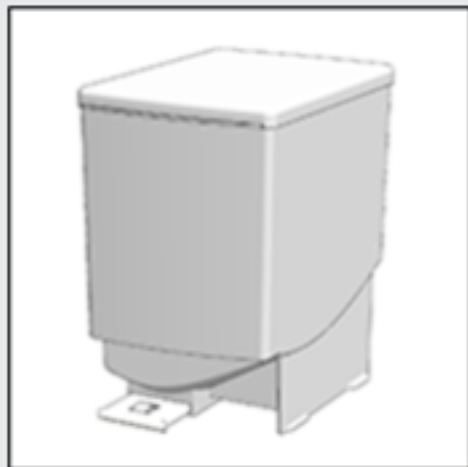
## Weekly cleaning - canisters



- **Connect the yellow slider**
- **Remove and empty the canister**
- **Disassemble the outlet**
- **Clean the loose parts DRY, with a brush**
- **Put everything back in place correctly**
- **Open the yellow slider**
- **Activate 'rinse machine'**



## Weekly cleaning - bean container

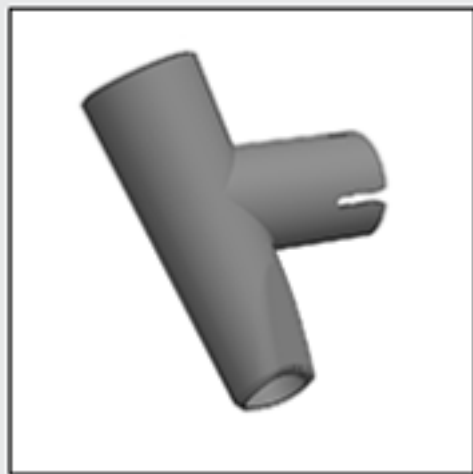


- Remove the bean container
- Empty the bean container
- Clean the bean container  
(NOT dishwasher-safe)
- Dry thoroughly





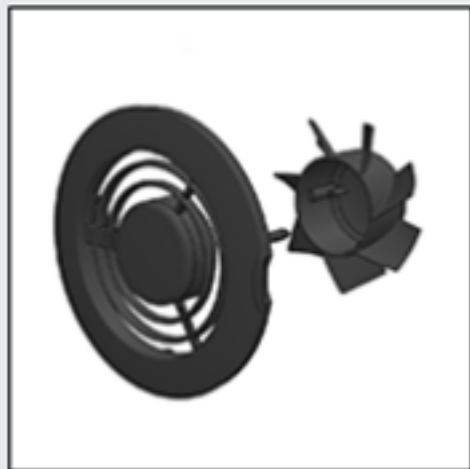
## Weekly cleaning - grinder outlet



- Remove the grinder outlet
- Clean the part with hot water and soap (NOT dishwasher safe)
- Dry thoroughly



## Weekly cleaning - ventilator



- Turn the machine off
- Clean the rotor with warm water and soap (NOT dishwasher-safe)
- Clean the ventilator housing with a brush or a damp cloth
- Put everything back in place correctly



## Clean weekly - interior



- Remove the canister and bean container
- Remove the drip tray and the waste bin
- Clean the inside of the machine with a damp cloth

